

GALAXY SUPER SEVERE MINE SLICK L-5S



LOAD HAUL DUMPER

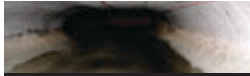


UNDER GROUND MINING

Galaxy Super Severe Mine Slick tire is engineered for the most demanding underground mining. The Super Severe features a specially formulated compound that delivers superior protection from cuts & snags and exceptional tread life. It is designed for maximum ground contact. It has a wide, flat tread for casing protection. Upper sidewalls are massive for protection against damages.



HARD SURFACE



OFF ROAD UNDERGROUND MINING



SEVERE ROCKY SURFACE



Size	Type	PR	RIM	OD	SW	RC	SLR	Recommended Load	Inflation Pressure	Speed
				mm in	mm in	mm in	mm in	kg lbs	bar psi	kmph mph
12.00-20	TT	20	8.5	1174	315	3447	523	6214	8.5	10
				46.2	12.4	135.7	20.6	13700	123	5
17.5-25	TL	28	14	1399	445	3686	572	10000	7.93	10
				55.1	17.5	145.1	22.5	22046	115	5
17.5-25 Steel Belted	TL	28	14.00/1.5X25	1390	445	4009	623	10000	7.93	10
				54.7	17.5	157.83	24.5	22046	115	5
18.00-25	TL	32	13.00/2.50	1648	498	4826	749	15000	7.5	10
				64.9	19.6	190.0	29.5	33069	109	5
20.5-25*	TL	20		-----UNDER DEVELOPMENT-----						
	TL	20*		-----UNDER DEVELOPMENT-----						
23.5-25 Steel Belted	TL	24	19.5/2.5	1656	597	4805	749	12500	4.75	10
				65.2	23.5	189.2	29.5	27558	70	5
26.5-25 Steel Belted	TL	32	22x25	1798	684	5167	791	17000	5.5	10
				70.8	26.9	203.4	31.1	37479	80	5
29.5-25	TL	40	25 X 25	1921	749	5463	828	21800	6.3	10
				75.6	29.5	215.1	32.6	48061	91	5
35x65-33 Steel Belted	TL	42	28" X 33	2077	890	6200	940	26500	6.6	10
				81.8	35	244.1	37	58422	96	5